



Make it your campus



For more information, please visit lancaster.ac.uk

Great Hall Square

"I love that everyone is much closer and you meet so many more people in comparison to a city uni."

Naomi Oti
Cartmel College

Our green and spacious campus is around three miles south of the City of Lancaster. It is the complete setting for your life and your studies, with new and extended sports facilities, places to relax and socialise, and study spaces to suit your mood. Once here, you'll make this campus your own.

Contents

Campus

- 04** Supported
- 06** Together
- 08** Home
- 10** Leisure
- 12** Active
- 14** Calm
- 16** Hungry?
- 18** Equipped



Woodland pods



Moving in weekend

"From my first day here, the college has supported me in feeling at home, and supported me in getting the most out of my time here."

Amelia Doran
Furness College

For more information, please visit lancaster.ac.uk



Furness College



Barker House Farm

Supported



Summer Extrav celebrations



scan for video

"If you are not from the UK, don't worry, you will always find a piece of home here on campus."

Fuk Ching Wong
Graduate College



Welcome Week

We're one of only a handful of UK universities with a collegiate system. Our colleges are individual, inclusive and diverse communities. The accommodation you choose determines which of our colleges you can pick from. Graduate college is exclusively dedicated to postgraduate students.

Your college will host events, social and sporting activities, arrange inter-college competitions and sports leagues, alongside regular college trips and excursions. They also deliver two of the biggest social events in the annual college calendar - the winter ball and the summer extravaganza.





For more information, please visit lancaster.ac.uk

Cartmel College

Together

Each of our nine colleges has a different social space with its own personality and vibe. There are plenty of places to eat, drink, study, meet friends, attend events or just hangout. Don't worry, you can access all the college spaces across campus, but we're sure you'll end up having a favourite or two.

County College



Grizedale College

"My favourite places to meet friends are Barker House Farm and Grizedale Bar."

Maria Clark
Cartmel College



Furness College



Fylde College



scan for video

Pendle College



"I usually sit on Alex Square or the benches outside Fylde bar. They are little sun traps where you can people watch and enjoy food, drink and the weather."

Catherine Brabin
County College





Home

Our accommodation has been rated the UK's Best University Halls in the National Student Housing Awards eight times since 2010. Two thirds of our accommodation is en suite, but we also offer standard accommodation with shared toilet and shower facilities. Most of our accommodation is self-catered and has a kitchen and shared social space, but catered packages are available.



scan for video

"My favourite spot for serious study is my room on campus. It's really cosy and comfortable and I have access to everything I need. I have a lovely view of the covered walkway out of my window and it's usually nice and peaceful."

Phoebe Louise McEwen
Pendle College



For more information, please visit lancaster.ac.uk

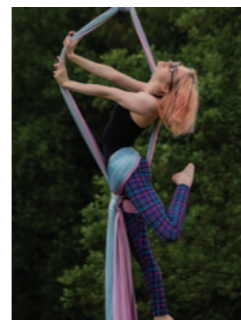




Leisure

University is a great opportunity to try something new or continue an existing hobby or passion. When we say there's something for everyone, we mean it... from Acapella to Whosoc, Barbell to Parkour, there's a society for you. Societies are a great way to let off steam, meet like-minded people and have fun. Volunteering and academic societies also give you a great opportunity to develop and gain experience.

For more information, please visit lancaster.ac.uk



scan for video



"I really enjoy going to Craft Society sessions. We have a new crafting activity to try each week, so it's a good opportunity to try things which you might not have done otherwise. I'm not always the best crafter, but that doesn't matter. It's connecting with other students and trying new things which is the most important part."

Phoebe McEwen
Pendle College



"I had zero dance experience but I found a home in the Hip Hop and Breakdance society. It was a safe space where I could unwind and explore different dance genres all while making friends and building my confidence."

Tai Rosemin
Bowland College



scan for video



8.5m climbing wall



100 station fitness suite

25m swimming pool



For more information, please visit lancaster.ac.uk

Active

Arriving on campus, you'll spot our impressive sports centre. We've invested over £25 million in our sports facilities, including multi-purpose sports halls, a climbing wall, swimming pool, fitness suite and strength and conditioning room. Outside there's the football, rugby and hockey pitches you'd expect, as well as basketball, netball and tennis courts.

"My perfect day on campus starts with a lie in, I'd wake up and head to the gym. Workout, go for a swim, before running home. I'd then probably relax for the rest of the day and order a Sultans to my door for tea- it's about balance!"

Ryan Yates
Grizedale College

Roses is a great sporting tradition between the students of Lancaster and the University of York. This annual friendly tournament hosts over 50 different sports and more than 100 fixtures in one weekend. Whether you're competing or cheering from the side lines, it's a highlight of the university calendar.



"As well as having a great time on the pitch, the best part of Roses weekend for me was celebrating with my team mates after the game and cheering the rest of the teams from the sidelines. It's always a nice supportive atmosphere."

Tom Scott
County College





Lake Carter

Calm

Our love of green space makes our campus stand out from others. Surrounded by 150 year old woodland that you can explore with paths and trails, we've designed campus to have plenty of pockets of green space to enjoy whilst walking between lectures or taking some time out. We've even brought greenery inside our library with living walls and a tree affectionately named Norma.

"I love how beautiful the campus is at all different times of year. My flatmates and I love to walk around at night, as it's incredibly safe and quiet."

Maria Clark
Cartmel College

For more information, please visit lancaster.ac.uk



The Bonington Step

Great Hall Court



"The wildlife living around the accommodation is so special. It's nice to look out a window and see a rabbit, squirrel or a duck. They make great neighbours!"

Raven Alexandra Trigo
Bowland College



scan for video





For more information, please visit lancaster.ac.uk

Starbucks at Barker House Farm



Wibbly Wobbly Burger Bar



Marketplace cafe



scan for video



Weekly market

"Everyone's first choice for lunch is Greggs, to avoid the queue I recommend Pizzetta or Subway for a sandwich."

Ryan Yates
Grizedale College



Pizzetta Republic

Hungry?

Campus has lots of places to eat, whether you want a sit down meal, takeaway, a speciality coffee or just something to grab and go. There are familiar options like Greggs, Subway and Costa, but also burritos, traditional Chinese food and a curry house. Don't forget our weekly market with food stalls.

"There's loads of options but my friends like to go to Sultan's. Everyone likes it and there is a large variety to choose from - I love the milkshakes!"

Csenge Karl
Cartmel college

Sultan's of Lancaster





Edward Roberts Court

The launderettes are fantastic. There are loads and they're open for such long hours. Going to the launderette became part of my weekly routine and I ended up enjoying laundry!

Maria Clark
Cartmel College

For more information, please visit lancaster.ac.uk

Equipped

As well as the things you want for a great time on campus, there's also everything you need to live comfortably. Launderettes, a post office, medical centre, pharmacy, hair salon, barbers and more means you don't have to travel far.



One of many launderettes on campus

Spar supermarket



Blackwell's

Central supermarket





Lancaster University, Lancaster, LA1 4YW
+44 (0)1524 65201
lancaster.ac.uk

